

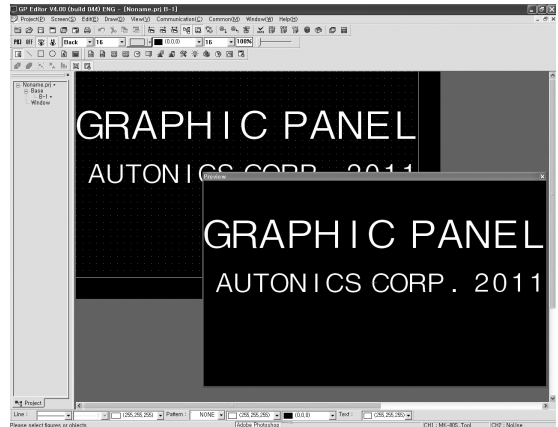
GP Editor

GP Editor (Drawing Program)

■ GP Editor Overview

GP Editor which is dedicated software for user defined screen data in GP/LP helps draw screen or edit data. After editing screen data such as tag form, arrangement, and attribution, download these to GP/LP and GP/LP starts to monitor by screen data.

※Visit our website (www.autonics.com) to download the user manual and software.



<GP Editor screen>

■ Features

- **Supports multi-font**
: It supports windows true type fonts and several bitmap fonts. (It is selectable.)
- **Convenient user interface**
- **Upgrades firmware of GP (GP/LP mono color type: GP-S044, GP-S057, LP-S044)**
- **Screen Layout**
: Title bar, menu, tools, status bar, edit area, non-edit area, preview
- **Several edit feature (group, alignment, select, draw)**
- **Panel kit/Part library**
: Panel kit library: Created library by user
Part library: Supplied basic library by GP Editor
Part: Registers several numbers or groups of only figure objects (line, rectangle, circle, text, BMP)
- **Supplies diverse image library**
- **Overlap screen for screen edit efficiency and for saving data capacity**
- **Memory**
: Feature for composing project screen of GP/LP, memory free space, checking firmware version, and delete the desired screen
- **Check data**
: Automatically executes to check data error when download the data to GP/LP
- **Preview**
: Shows screen on the device with 100% of enlargement ratio
- **Supplies help information for program usage**

■ Installing The Program

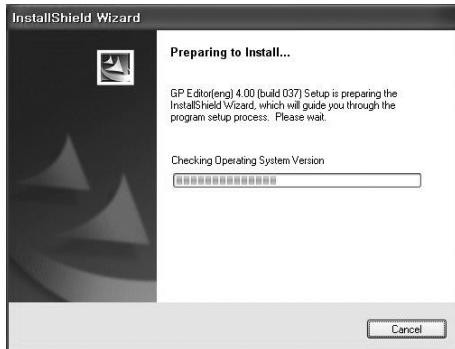
◎ System requirements

< Computer specification for using software >

Item	Minimum requirements
System	IBM PC compatible computer with Pentium Dual Core or above
Operations	Microsoft Windows 98/NT/XP
Memory	1G+
Hard disk	5GB+ of available hard disk space
VGA	1028×1024 or higher resolution display
Others	<ul style="list-style-type: none"> GP/LP-S044, S057: RS232C port GP/LP-S070: RS232C port, USB port, ETHERNET port

◎ Installation

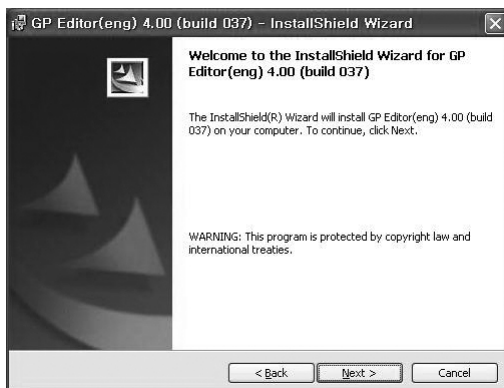
1) Before installing GP Editor, it is recommended to shut down the other programs. Double-click installation setup file, and installation is start.



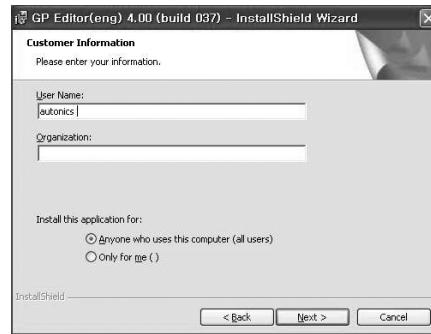
2) Click 'Next' after InstallShield wizard is ready.



3) Click 'Next' to continue installation.



4) Enter your information, and click 'Next'.



5) Designate installation location, and click 'Next'. (Default installation path is C:\Program Files\Autonics\GP Editor 4.01\)



6) To change the installation location, click 'Change' and select the desired folder and click 'OK'.



7) Installation starts and you can check installation progress at the same time.



(A)

Photoelectric Sensors

(B)

Fiber Optic Sensors

(C)

Door/Area Sensors

(D)

Proximity Sensors

(E)

Pressure Sensors

(F)

Rotary Encoders

(G)

Connectors/ Sockets

(H)

Temperature Controllers

(I)

SSRs / Power Controllers

(J)

Counters

(K)

Timers

(L)

Panel Meters

(M)

Tacho / Speed / Pulse Meters

(N)

Display Units

(O)

Sensor Controllers

(P)

Switching Mode Power Supplies

(Q)

Stepper Motors & Drivers & Controllers

(R)

Graphic/ Logic Panels

(S)

Field Network Devices

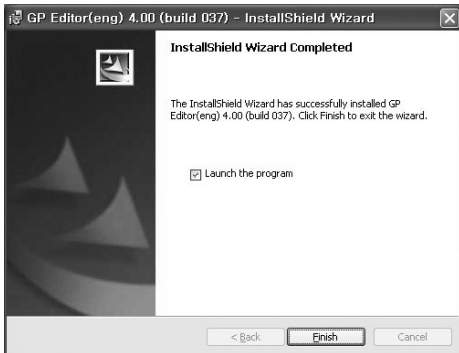
(T)

Software

GP Editor

◎ Installation

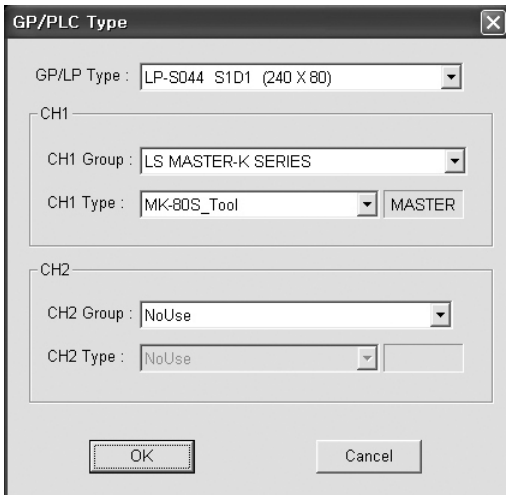
8) After completing installation, click 'Finish' and GP Editor runs. If you do not want to run GP Editor, non-check 'Launch the program' and click 'Finish'.



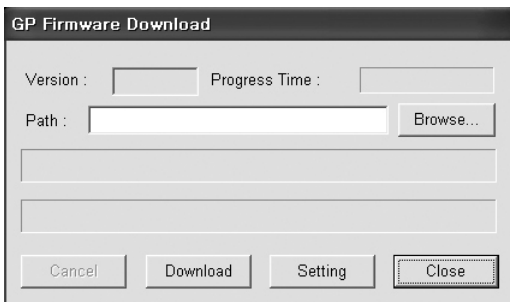
◎ Firmware Download

You can change GP/LP firmware by downloading from GP Editor. GP Editor supports the firmware download only GP/LP mono type (GP-S044, GP-S057, LP-S044). For GP/LP color type (GP-S070, LP-S070), use USB HOST of GP/LP and firmware upgrade is available.

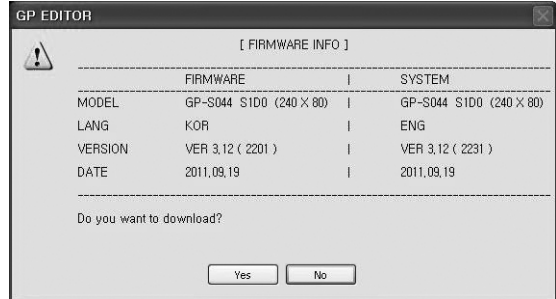
1) You can download only for same firmware GP/LP type with GP/LP type designated at GP Editor. Select [Common]-[GP/PLC Type] of menu, 'GP/PLC Type' dialog box appears. By pull-down menu, designate to be downloaded GP/LP type.



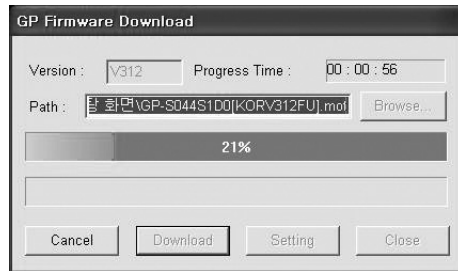
2) Select [Communication]-[GP Firmware Download] of menu and 'GP Firmware Download' dialog box appears. Click 'Browse' and select firmware file to be downloaded.



3) Click 'Download' and the firmware information dialog box for current GP/LP firmware appears and asks whether to download or not. If connected GP is not same as the designated GP type from [Common]-[GP/PLC Type] of menu, error message appears.



4) Click 'Yes' and GP/LP screen displays 'GP FIRMWARE UPGRADE' message. GP Editor displays 'GP Firmware Download' dialog box and download progresses.



5) If you want to discontinue download, click 'Cancel' and 'Do you want to interrupt firmware download?' message appears. Click 'Yes' and it discontinues download. For discontinuing download, re-start GP/LP.



6) When completing download successively, GP/LP displays 'UPGRADE OK PLEASE POWER OFF' message. When failing download, GP/LP displays 'UPGRADE NG PLEASE POWER OFF' message.

Re-start GP/LP. GP/LP maintains before firmware version and it does not affect to GP/LP operation.

※(Note)

The unit which has two RS-232C ports are available to firm-ware download only at the RS-232C B port. The unit which has each of a RS-422 port and a RS-232C port are available to firmware download only at the RS-232C port.

※(Caution)

After firmware upgrading, all of GP/LP user data are deleted.

Before upgrading firmware, select [Communication]-[Upload] of menu to save the desired data.